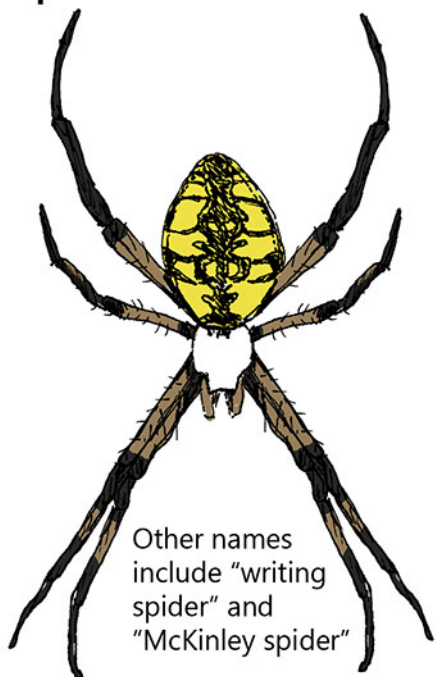
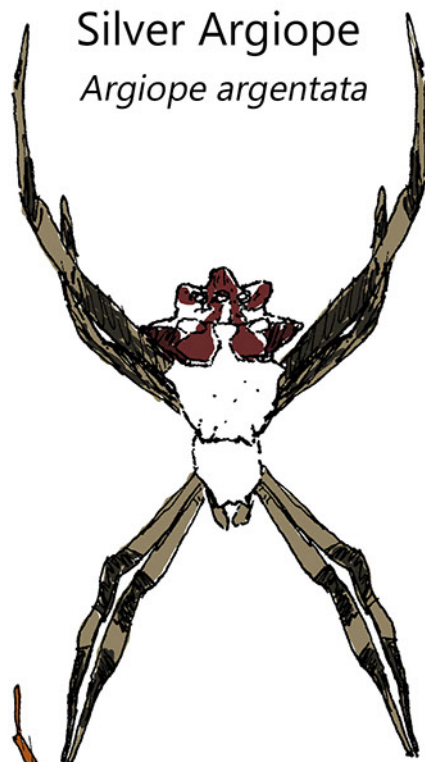


Spiders



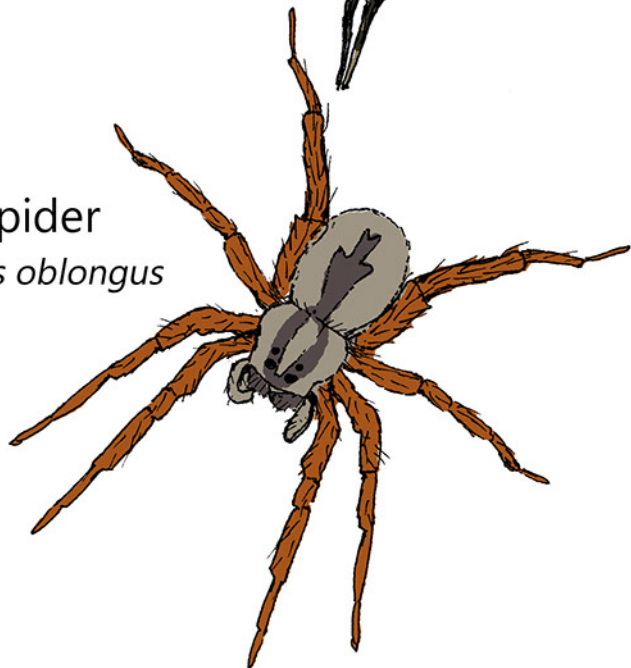
Other names include "writing spider" and "McKinley spider"

Yellow Garden Spider
Argiope aurantia



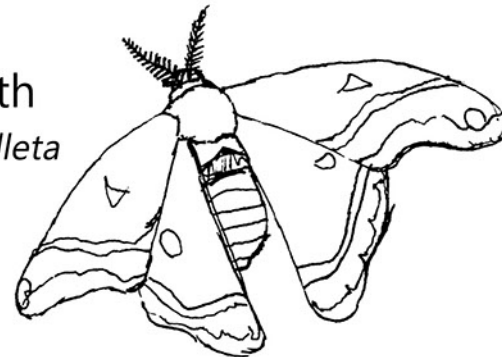
Silver Argiope
Argiope argentata

Wolf Spider
Misumessus oblongus



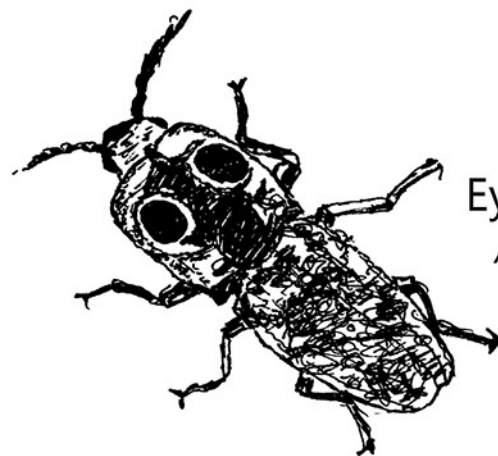
ISSUE 1

Calleta Moth
Eupackardia calleta



AN ILLUSTRATED GUIDE TO THE INSECTS AND ARACHNIDS OF CORPUS CHRISTI, TEXAS

BY ERICA DUNCAN



Eyed Click Beetle
Alaus oculatus

Table of Contents

- | | |
|----------------|----------------|
| 1. Disclaimers | 7. Butterflies |
| 2. True Bugs | 8. Moths |
| 3. True Bugs | 9. Moths |
| 4. Beetles | 10. Spiders |
| 5. Beetles | 11. Spiders |
| 6. Butterflies | |

Disclaimers

I'm just a hobbyist! There could be discrepancies in the illustrations. Images are NOT to scale.

Proceed with caution when interacting with any insect you are not sure about!

I have omitted the order of insects that include flies, wasps, bees, and ants. Maybe they'll get included in issue #2!

I've mainly focused on arthropods found in the Tom Graham Learning Garden.

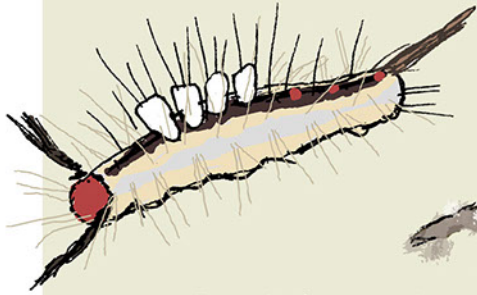
Spiders

Spiny Orb-Weaver
Gasteracantha cancriformis

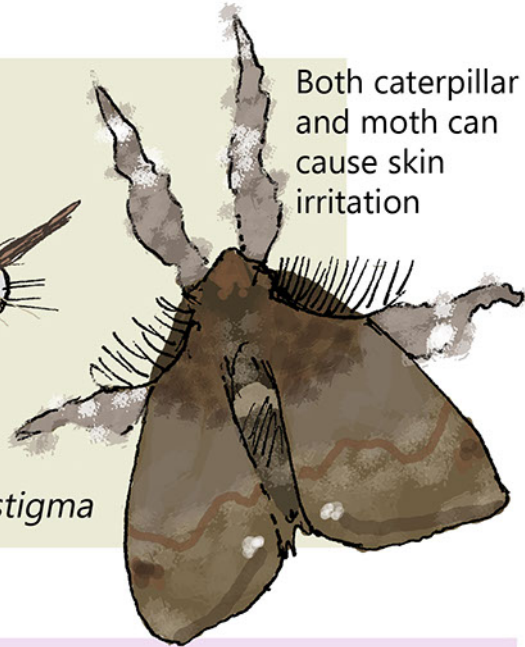


Moths

White Marked Tussock Moth

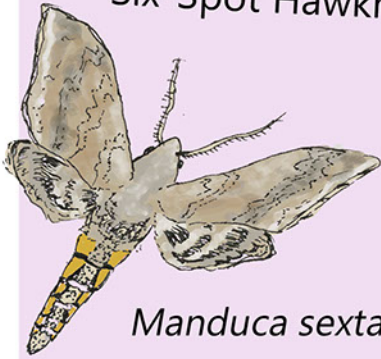


Orygia leucostigma



Both caterpillar and moth can cause skin irritation

Six-Spot Hawkmoth

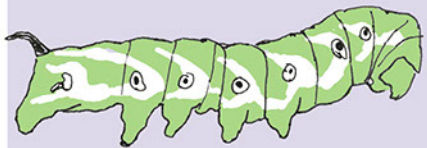


Manduca sexta

Tobacco Hornworm



Tomato Hornworm



Manduca quinquemaculata



Five-Spotted Hawkmoth

True Bugs



Eggs



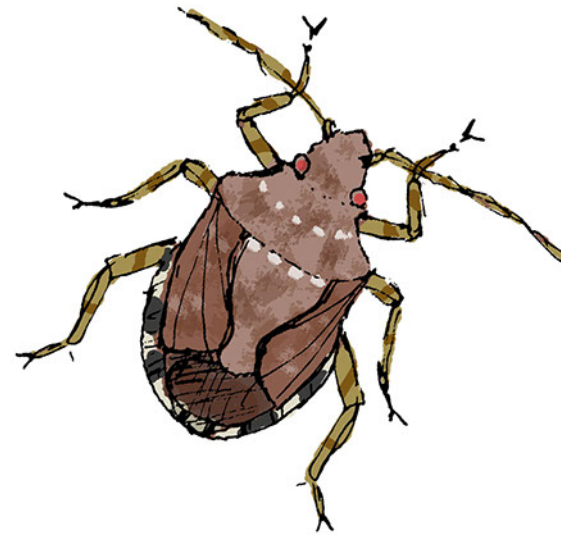
Nymph

Harlequin Bug
Murgantia histrionica

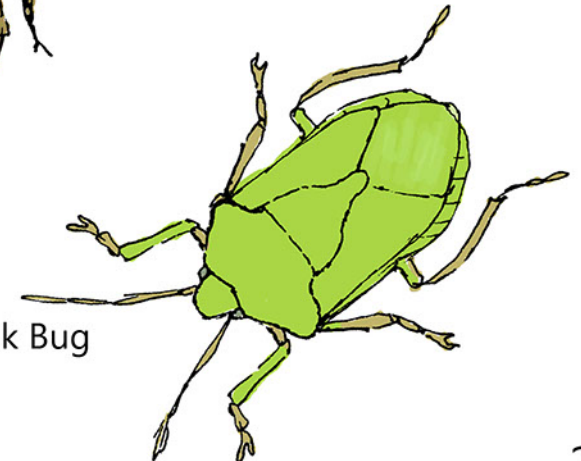
(Can be found on kale and cabbage)



Adult

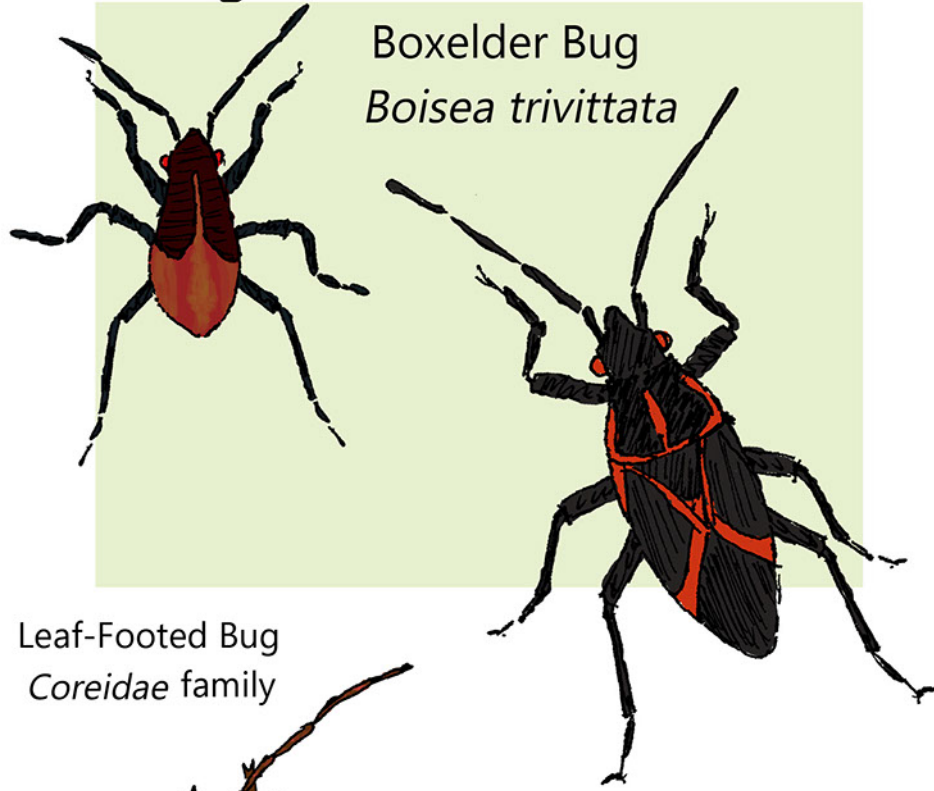


Brown Marmorated Stink Bug
Halyomorpha halys



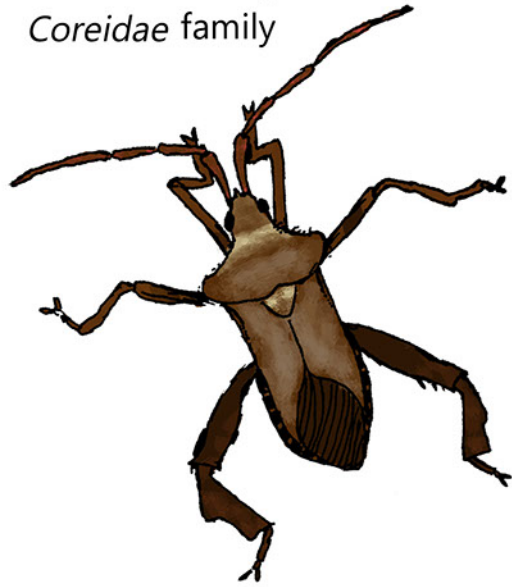
Southern Green Stink Bug
Nezara viridula

True Bugs



Boxelder Bug
Boisea trivittata

Leaf-Footed Bug
Coreidae family

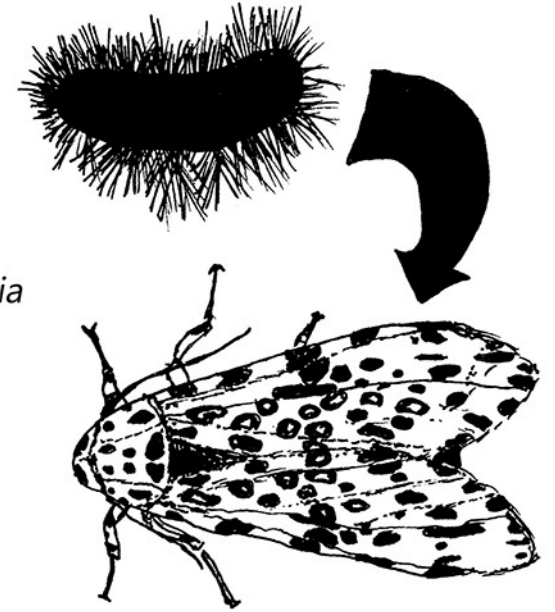


Large Milkweed Bug
Oncopeltus fasciatus

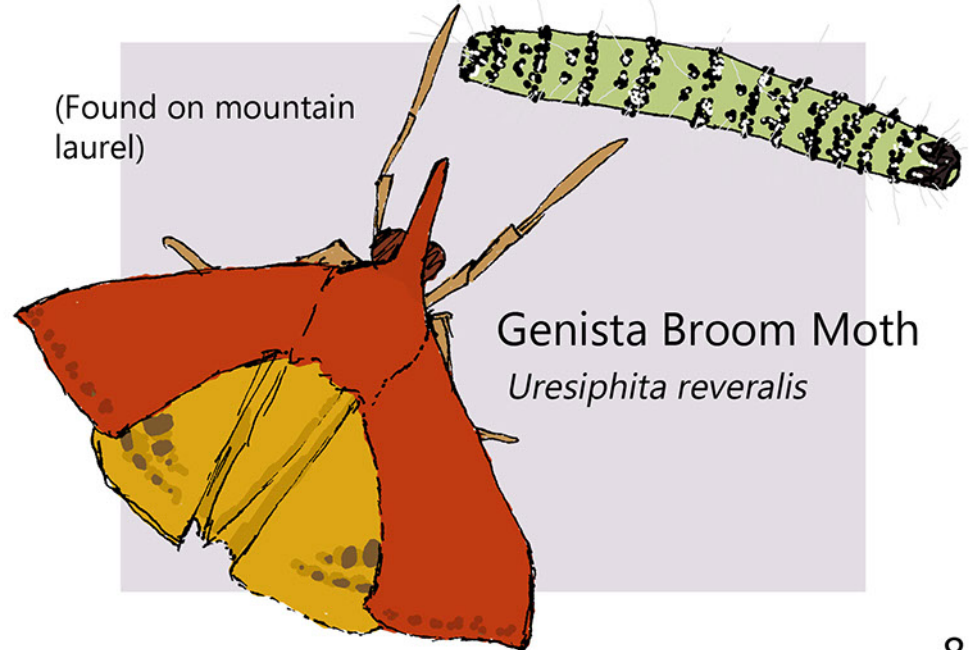


Moths

Leopard moth
Hypercompe scribonia



(Found on mountain laurel)



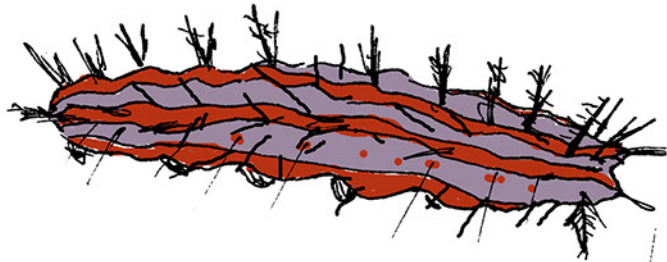
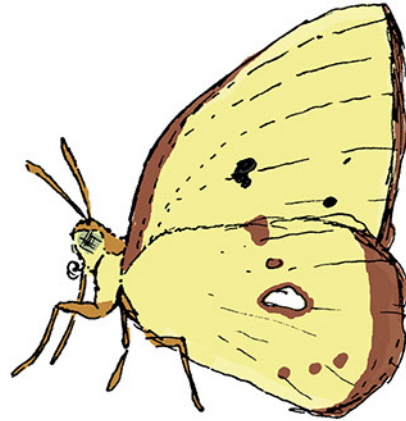
Genista Broom Moth
Uresiphita reversalis

Butterflies



Painted Lady
Vanessa cardui

Clouded Yellow
Colias croceus



Gulf Fritillary
Agraulis vanillae



Beetles



Ladybug pupae

Even though I'm called a lady'bug', I'm actually a beetle!



Ladybug larvae



Seven-Spot Ladybug
Coccinella septempunctata

Although very common, this ladybug is not native to Texas!

Red Lady (Ladybug)
Cycloneda sanguinea

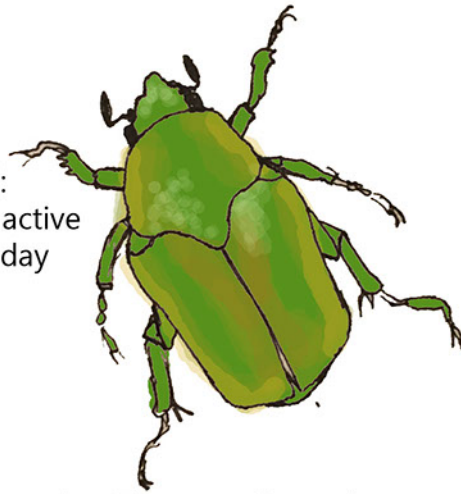


Beetles

Green June Beetle

Cotinis nitida

Diurnal:
Mostly active during day



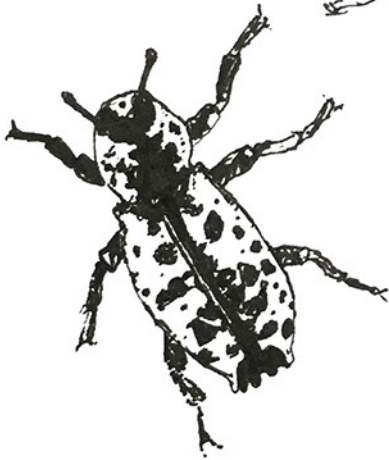
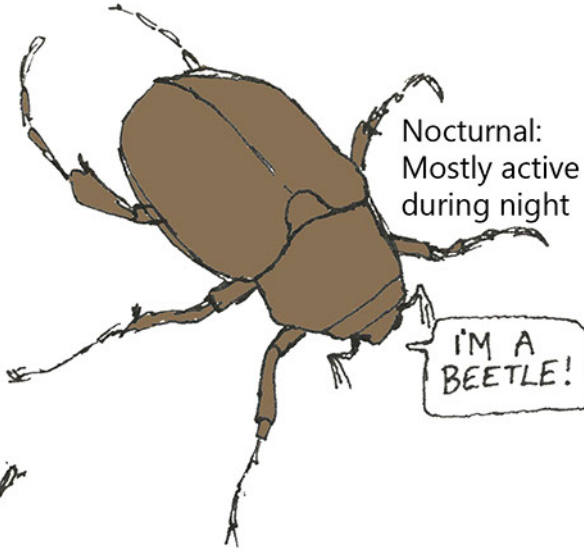
Harlequin Flower Beetle

Gymnatis caseyi

"June Bug"

Phyllophaga sp

Nocturnal:
Mostly active during night

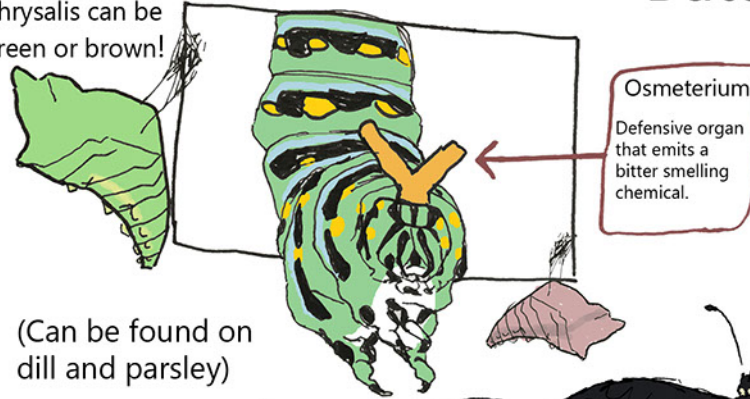


Ironclad Beetle

Zopherus nodulosos

Butterflies

Chrysalis can be green or brown!

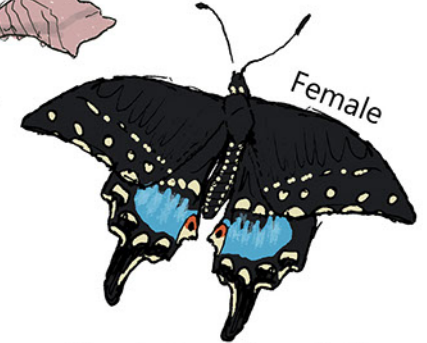


Osmeterium
Defensive organ that emits a bitter smelling chemical.

(Can be found on dill and parsley)



Male



Female

Eastern Black Swallowtail

Papilo polyxenes



caterpillar

Monarch

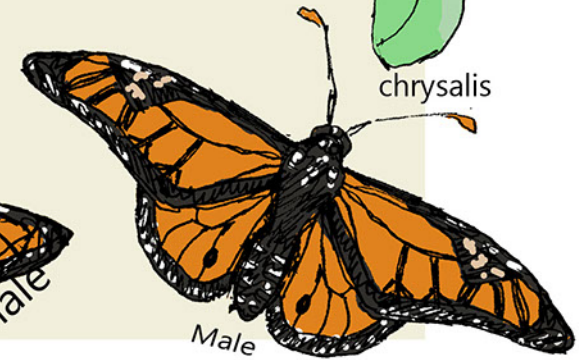
Danaus plexippus



chrysalis



Female



Male